

The Nubian Consulting Online Atlas of Libya gives reserves estimates for all the oil and gas discoveries of the country onshore and offshore up until 2015. It is easy to use on a day to day basis and valued for its extensive functionality.



Interface Map with satellite imagery, petroleum provinces, surface geology and pipelines

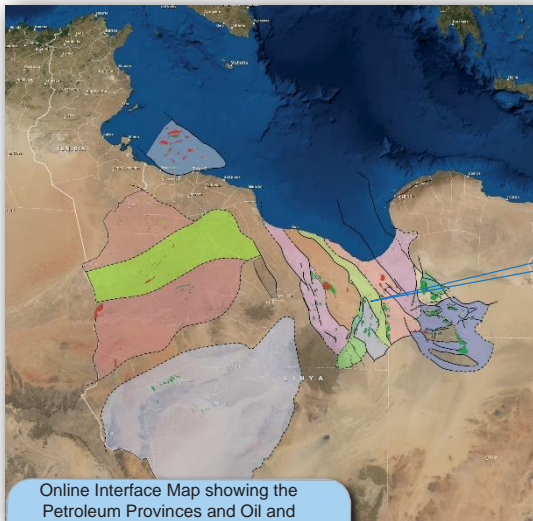


## The Atlas features:

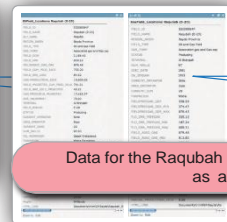
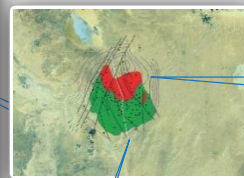
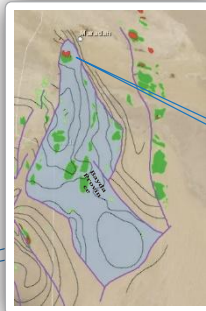
- Descriptions, histories and reserves estimates for 466 oil and 91 gas fields discovered onshore and offshore Libya
- Well locations and summarised well results (8,857 wells)
- Top reservoir structure maps for the majority of fields with originally recoverable reserves of more than 10 million barrels of oil or 60 bcf of gas
- Geological sections across fields (168) and 35 regional geological cross-sections
- Transparent reserves calculations for each field with specified reservoir parameters
- Regional depth maps on major horizons
- Petroleum provinces and licensing areas

The detailed maps, cross-sections and reserves calculations distinguish this atlas from other field databases.

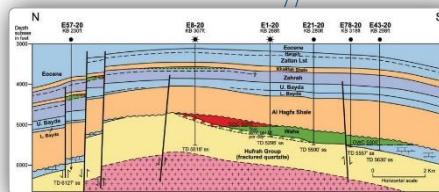
ESRI's 'Cloud' based ArcGIS Online platform is used to deliver this Atlas.



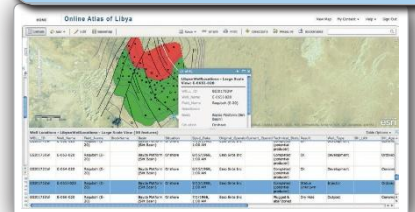
Online Interface Map showing the Petroleum Provinces and Oil and Gas Fields of Libya



Data for the Raqubah Field is shown here as an example

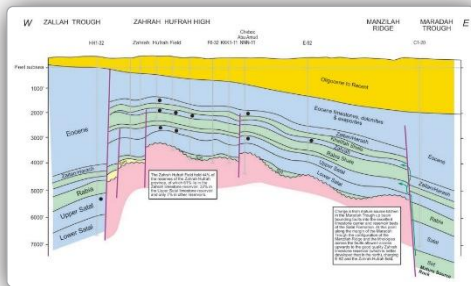


Filter functions allow user to query and display data for specific attributes, e.g. wells in the Raqubah Field

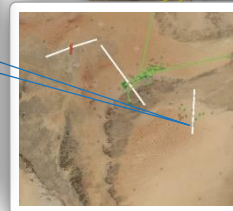
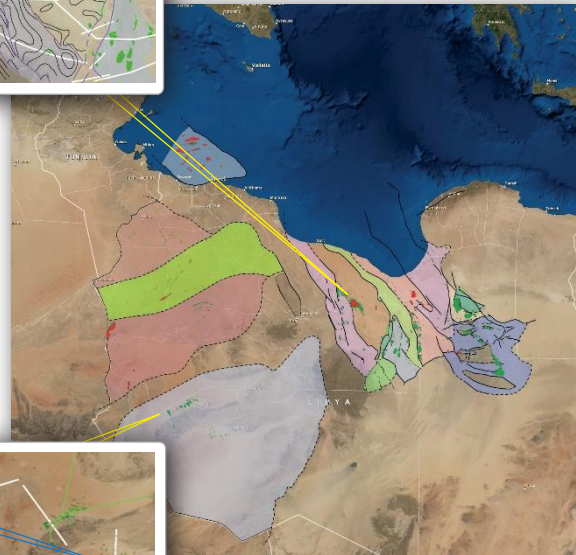
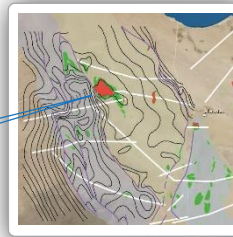
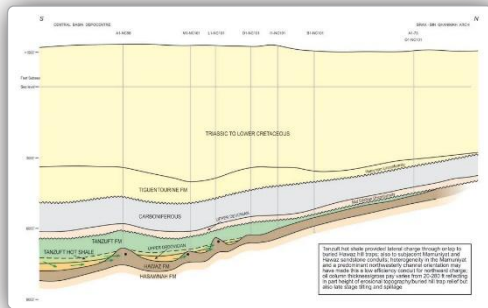


With a few clicks, even on a smartphone or tablet, users can:-

- Zoom and navigate over the entire map of Libya with a background of petroleum province, surface geology or satellite imagery
- View status of exploration, appraisal and development wells
- Search for data on specific fields and wells
- See fields in the context of regional cross sections, key depth maps, petroleum provinces and stratigraphic columns
- Review top reservoir depth map and cross section, field by field
- Identify trapping mechanisms
- Discover oil and gas reserves estimates and see the reservoir parameters behind the calculations
- View petroleum geology literature with references for each field
- See location of oil terminals and oil and gas pipelines
- Place all the above data in context of licences and licensees



Regional structural cross-sections through the Zarah Hufrah Platform and the Murzuq Basin, including information on petroleum systems



## A special package has been established for the current Licence Round

Subscriptions are offered for a one year licence fee of £5,000.

Nubian Consulting  
Oak Court  
Silver Street, Wiveliscombe, Somerset, TA42PAU.K.  
U.K. contact: Dr Daniel Clark-Lowes

d.clarklowes@nubianconsulting.co.uk  
Telephone: 44 (0) 1984 624528  
07980 897270  
www.nubianconsulting.co.uk

